

PROPERTY FEATURES: 253 STONE POINTE TRAIL CASTLE ROCK, COLORADO



PROPERTY OVERVIEW

- Modern Mediterranean-inspired custom home showcasing the most breathtaking 360-degree Front Range views in town.
- Set on over 35 acres, the property unfolds with a circular driveway, private pond, and new landscaping that blends seamlessly into the natural surroundings.
- Craftsmanship throughout, featuring wood, barrel ceilings, and tailored architectural details.
- Located in Tessa Mesa, a gated community of 16 homesites with custom residences.
- A cattle lease through the HOA provides the neighborhood with exceptionally low AG taxes - homeowners must sign contract.
- Builder: Element Home Company, Mil Younkers.
- Designer: Greg Enger, Enger Architecture.
- Utilities: approximately \$500/month
- HOA Dues: \$8,800 annually, includes road maintenance, snow removal, and common area maintenance.
- 2024 Taxes: \$22,745

RESIDENCE

- Thoughtfully designed main-floor living, upper "crow's nest", and finished walk-out basement.
- Square footage:
 - Above grade: 4,416 sq. ft.
 - Crow's nest: 850 sq. ft. approximately.
 - Finished: 7,262 sq. ft.
 - Lower level finished: 2,846 sq. ft.
 - Lower level total: 2,916 sq. ft.
 - Total: 7,332 sq. ft.
- Four bedrooms: Main-level primary and guest suite, two on lower level.
- Seven bathrooms: Each bedroom has an ensuite, plus powder baths on the main level, lower level, and in the crow's nest.
- Four fireplaces: Great room, primary suite, crow's nest, and basement.

**To view the video, property website,
and more photos, visit:**

www.253StonePointe.com

RESIDENCE (CONT.)

- Expansive, light-filled living spaces with oversized windows frame breathtaking mountain vistas and promote effortless indoor–outdoor living.
- Intentionally planned amenities, including an executive office, the “crow’s nest,” dedicated fitness room, and lower level with full bar.
- Outdoor enjoyment year-round is ensured by a covered deck and spacious patio
- Oversized attached three-car garage with new epoxy flooring.
- Beautiful, ¾ inch red oak hardwood flooring throughout.
- Sonos® sound system with speakers in great room, kitchen, and basement.
- Pre-cast concrete exterior walls with stucco, stone, and brick accents, highlighting the home’s striking Mediterranean-inspired architecture.

MAIN LEVEL

Entry

- Formal front courtyard with arched stone entry, columnar details, new landscaping, and a balanced, symmetrical layout inspired by Mediterranean architecture.
- Arched 10-foot solid wood front doors are symmetrically centered, mirroring the rear doors to create a harmonious flow through the home.
- Two storage closets frame the front entry.
- Wrapping staircase to the “crow’s nest” features a soaring ceiling, clerestory windows that fill the space with natural light, a wood and wrought-iron banister, and lighted art niches.

Great Room

- Soaring ceilings highlighted by natural wood beams and a statement iron chandelier.
- Expansive arched windows and double door to the deck bring in natural light and frame uninterrupted views of the mountains.
- An oversized cast stone, gas-burning fireplace serves as a timeless focal point.
- The open-concept layout flows seamlessly into the adjacent dining room and kitchen.

Dining Area

- Spacious dining area with room for a table seating 8–10.
- Brick-accented barrel ceiling with Italian glass multi-drop chandelier.
- Open to the great room through a stone archway with columns.
- Walk-out access to the back deck.
- Pass-through arched window to staircase, accented by an iron star light fixture.

Kitchen

- Expansive kitchen with ample prep and storage space and two eating areas.
- Two waterfall islands with quartz countertops.
- Striking black, floor-to-ceiling cabinetry with soft-close doors.
- Eat-in nook with curved windows overlooking Pikes Peak.
- JennAir® 48-inch paneled side-by-side refrigerator and freezer.
- JennAir® 48-inch range with double oven, convection cooking, four gas burners, integrated grill and griddle, downdraft ventilation, and Zephyr® range hood.



Kitchen (cont.)

- JennAir® wine cooler, drink fridge, and ice maker.
- JennAir® drawer-style prep refrigerator and freezer.
- JennAir® dishwasher.
- Built-in, plumbed Miele® coffee maker.
- Blanco® Silgranit single basin undermount sink with hot water tap and reverse osmosis system.
- Ample prep and storage space, including an appliance garage and floating shelves that frame the cooktop.
- Authentic Italian wine window connects to the covered deck.
- Walk-in pantry with floating upper shelves and lower cabinetry with workspace.

Laundry/Mud Room

- Built-in tiled pet-wash station.
- Workstation with quartz counter, utility sink, plus ample cabinet storage, open shelving, and storage closet.
- Single French walk-out to driveway area.
- Washer and dryer not included.

Powder Bathroom

- Off the kitchen and garage.
- Darling Poppy flower wall decals.
- Floating vanity with vessel sink.

Garage

- Oversized three-car attached garage.
- Workshop space with ample storage.
- Newly done epoxy flooring.
- French doors lead to driveway plus lots of windows for natural light.

Office

- Windows frame mountain views.
- Floor-to-ceiling wood bookshelves provide functional storage.
- 8-foot ceilings with a modern circular pendant chandelier.
- Double wood door entry.

Primary Suite

- Double doors open to a covered private balcony with Front Range views.
- Vaulted 12-foot ceilings and ample windows add volume and light.
- See-through indoor/outdoor fireplace provides warmth to both the bedroom and balcony.
- Spacious layout with room for a king bed and sitting area.

Primary Bathroom

- Massive quartz walk-in shower with triple shower heads, including rain, dual wall-mounted, and handheld.
- Deep freestanding soaking tub positioned beneath a statement light fixture.
- Double sink vanity with quartz countertop and wall-mounted minimalist faucets, plus a built-in makeup vanity.
- Wall mounted radiant towel warmer.
- Private water closet with separate bidet with automatic cover.
- Unique stone sconces provide ambient lighting.
- Walk-in closet with custom organization system and center island.

Guest Suite

- Vaulted 11' ceiling with direct access to a charming Juliette balcony and large windows fill the room with natural light and offer views of the mountains and courtyard.
- Wired for light fixture.
- Closet with built-in shelving.
- Private ensuite bathroom includes walk-in shower with an arched entry and glass door plus detachable shower head, and a towel warmer.

UPPER LEVEL - CROW'S NEST

- Versatile space ideal for an office, additional living area, creative studio, library, or more.
- Twin balconies with arched French doors and custom terracotta tile inlay.
- Windows with cross-hatched panes bring in natural light and mountain views plus on a clear day you can see Chatfield Reservoir.
- Remote-controlled Heat & Glo® linear fireplace adds warmth and modern style.
- Powder bath with floating vanity, vessel sink, and terracotta tile flooring.

LOWER LEVEL

Recreation Room

- Spacious recreation room with a flexible layout for lounging, game tables, or entertaining, and built-in bookshelves for storage or display.
- Wet bar with wood paneling details, seating, and KitchenAid® appliances, including a full-sized refrigerator with drawer freezer, ice maker, and dishwasher, plus quartz countertops and open floating shelves.
- Heat & Glo® gas fireplace with remote control, floating rustic wood mantel, and “ghosting” exposed brick accents through the plaster.
- Walk-out access to a covered patio, pre-wired for a hot tub.
- Under-stair storage with mini arched wood door.

Gym

- Sliding barn door entry.
- Paneled wood accent wall.
- Rubber floor matting.



Lower Level Bedrooms

- One room features a built-in floating desk, window bench, walk-out access to lower patio, and 5-piece ensuite with a freestanding tub, walk-in shower, separate bidet, linen closet, and walk-in closet.
- The second bedroom includes two closets—one for clothing and one for storage—and a private ensuite with a bathtub/shower combination.

OUTDOOR LIVING

- The upper deck is partially covered and features a vaulted tongue-and-groove ceiling with pendant lighting, tile flooring with integrated drainage, and a gas line for grilling. Stone columns and archways frame the space, complemented by a curved viewing balcony with mountain views and a custom Italian wine door that connects directly to the kitchen.
- The lower patio, also partially covered, is finished with stamped concrete and pre-wired for a hot tub.

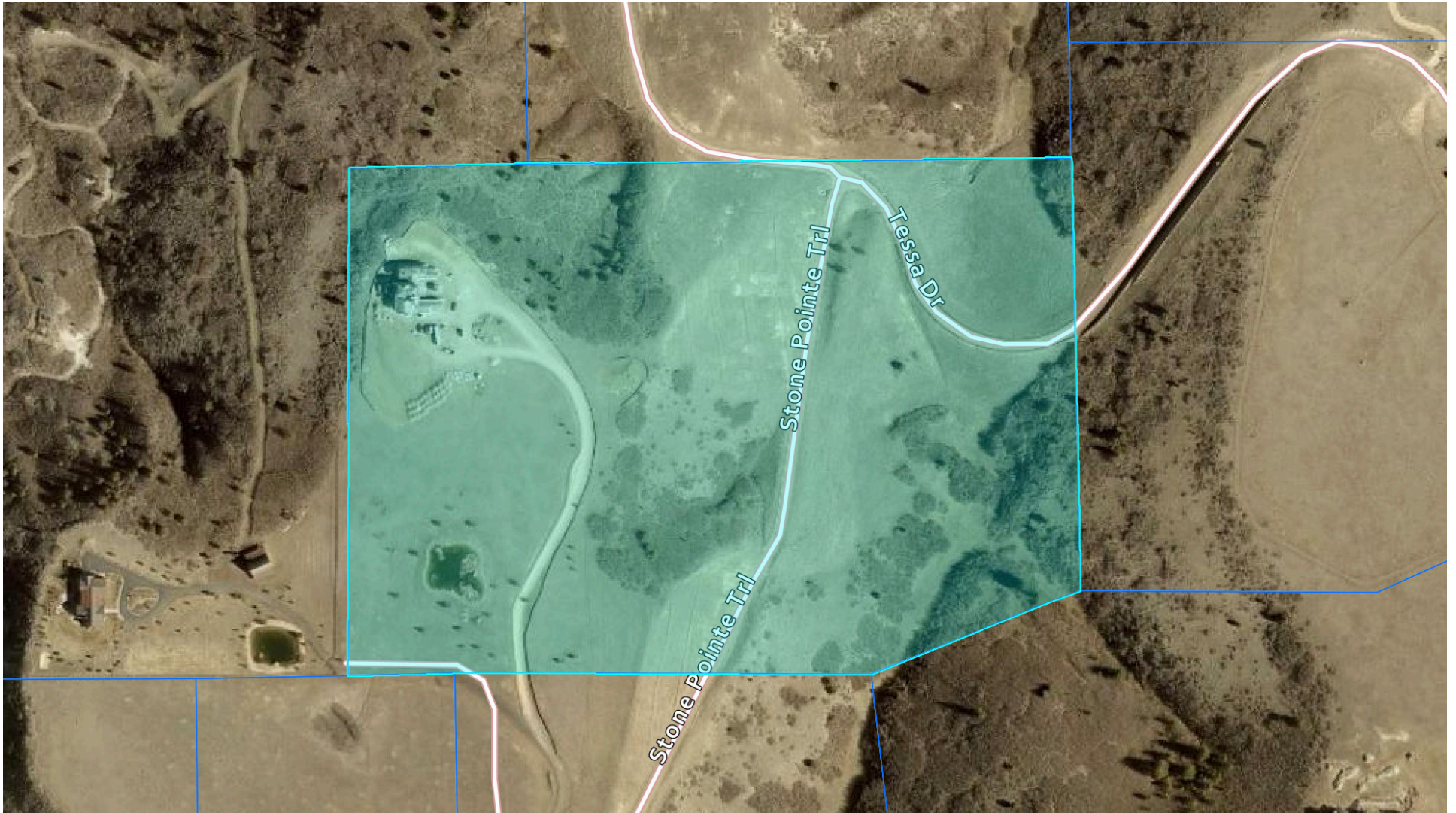
MISCELLANEOUS

- 8' doors throughout.
- Geo-thermal heating and cooling system.
- Three heat pumps control the heating and A/C: basement pump services the main-level living areas, kitchen, and basement; a second controls all bedrooms; and a separate unit serves the crow's nest.
- Starlink® satellite internet connected.
- All bathrooms run on tankless water heaters for instant hot water.
- Whole house water purifier and softener.
- UV coating and screens on all windows.
- Front courtyard irrigated with concealed lines.
- ADT® security system.
- Separate heat pump – crows nest.
- 300-gallon fire suppression tank
- Radon mitigation system.
- Leach field outside 4th bedroom (lower level).

BOUNDARY OUTLINE MAP

stucygroup

253 STONE POINTE TRAIL, CASTLE ROCK, COLORADO | 35.6 ACRES



*Property map is a visualization for marketing purposes only. Buyer should verify property boundaries.

LIV | Sotheby's
INTERNATIONAL REALTY